

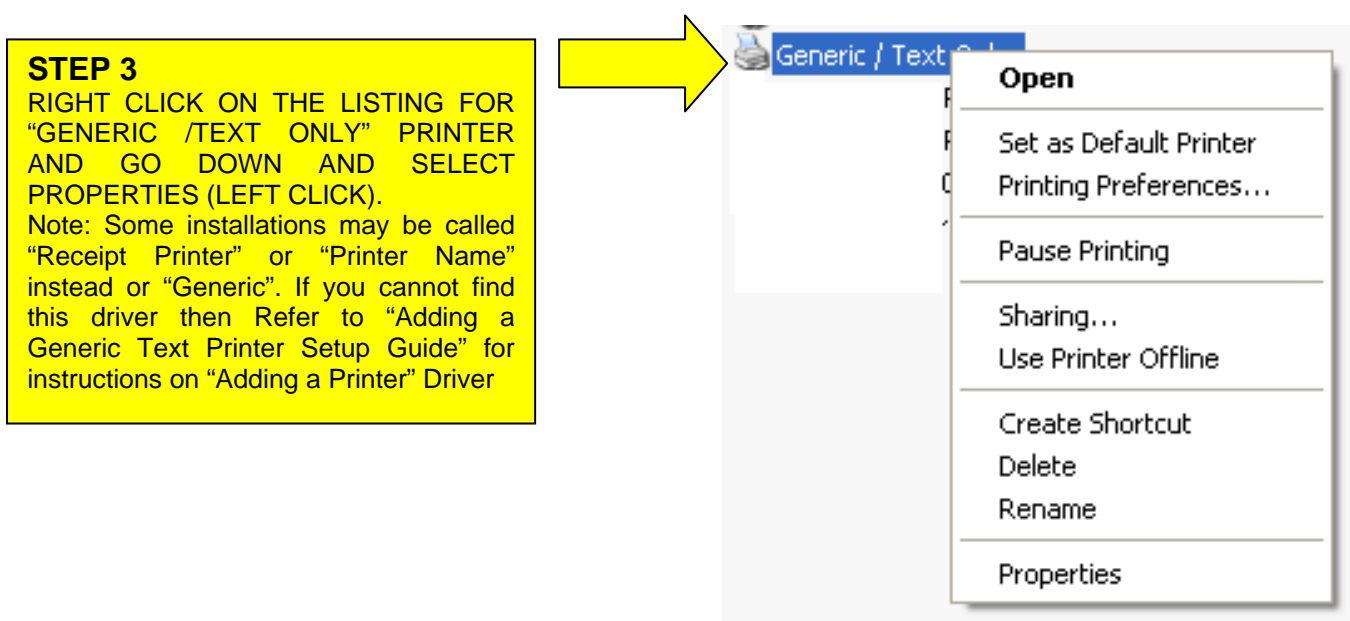
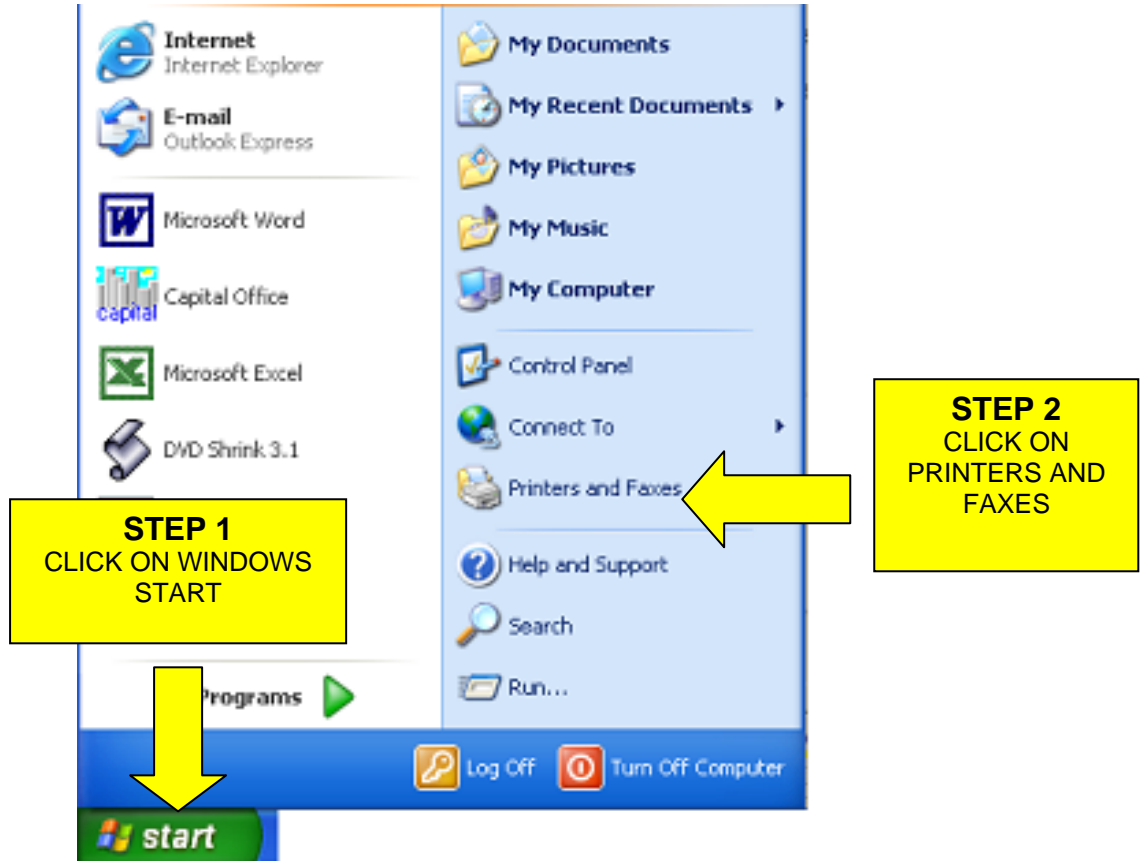
GENERIC TEXT DRIVER CODES

WINDOWS 2000 / XP

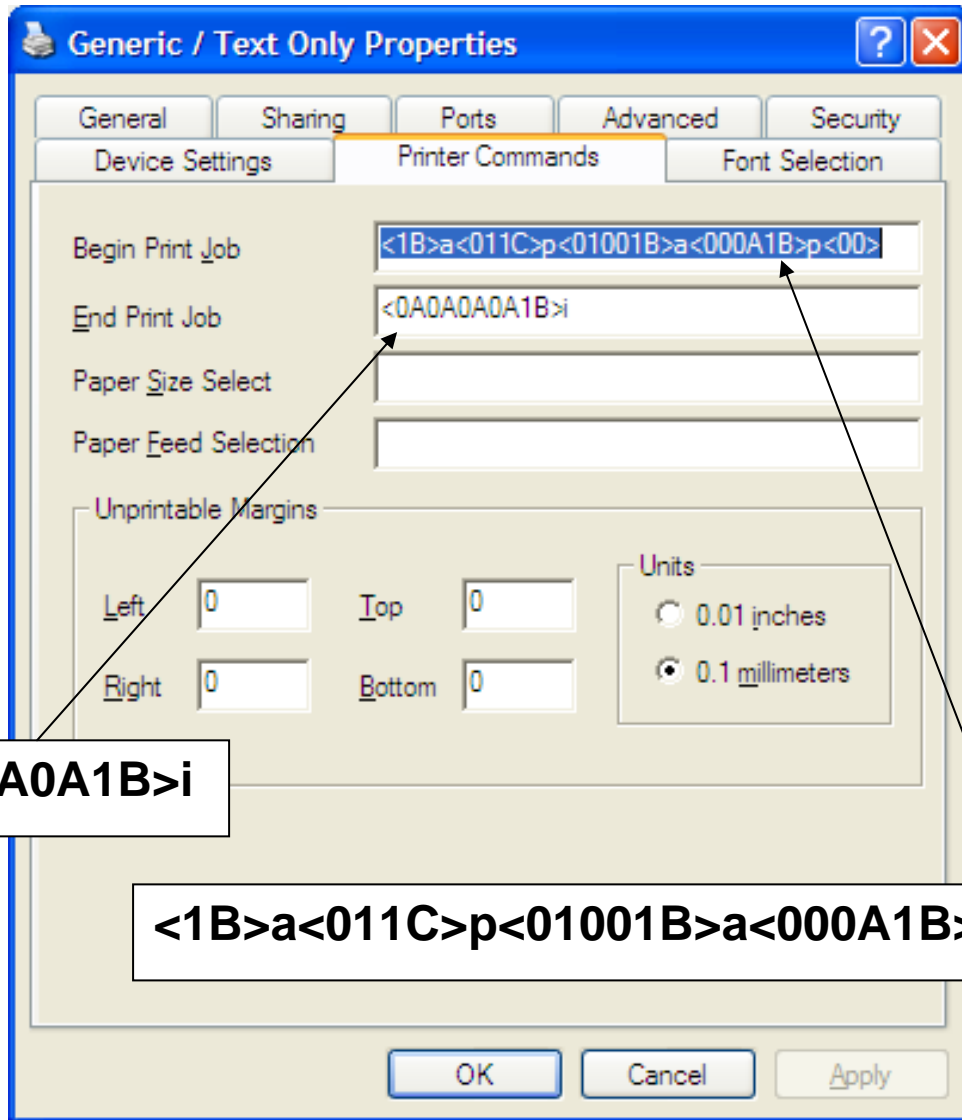
IMPORTANT NOTE

PLEASE RETAIN THIS DOCUMENT FOR FUTURE UPDATES

Trigger NV1 Centered and pulse peripheral circuit plus feed and cut
Esc / Pos Receipt Printers



**CHOOSE THE PRINTER
COMMANDS TAB**

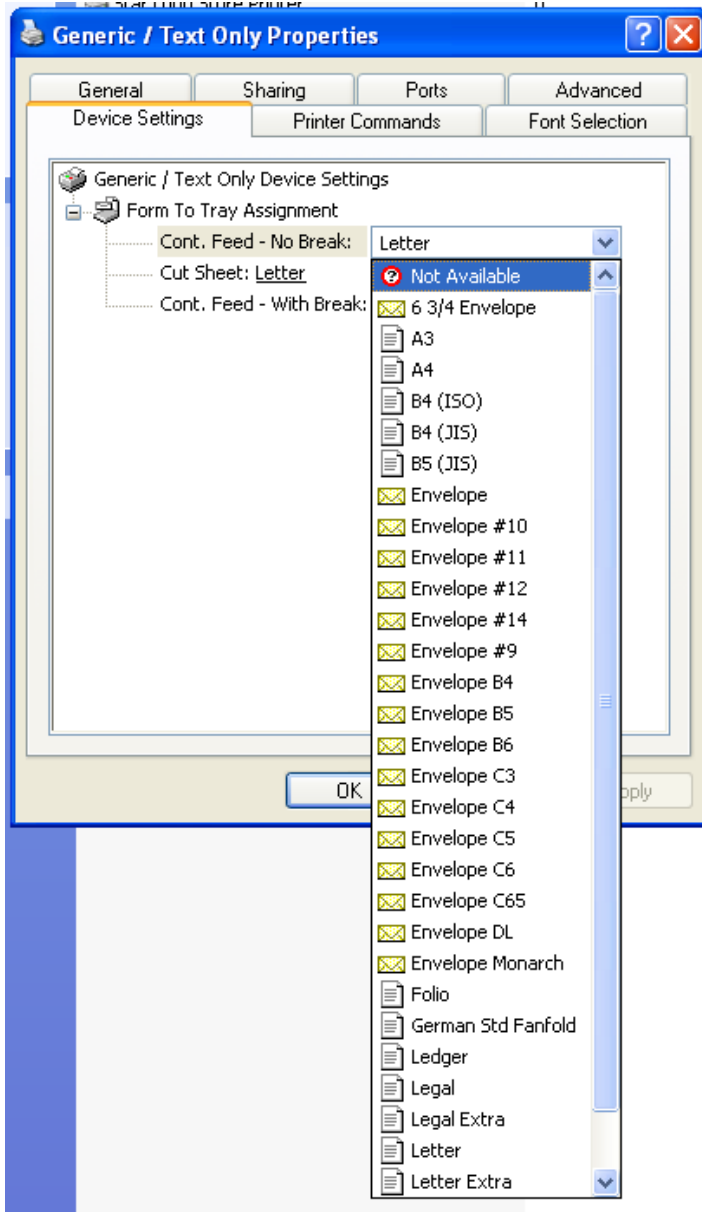


<0A0A0A0A1B>i

<1B>a<011C>p<01001B>a<000A1B>p<00>

STEP 4:

Select the "PRINTER COMMANDS" Tab and copy the above codes in the **Begin and End Print Job** lines. The above code is case sensitive. Use these codes if you wish to Print a Logo on your receipts and to enable the auto cutter and cash drawer functions.



CHOOSE THE DEVICE SETTINGS TAB

STEP 5:
Select the **“DEVICE SETTINGS”** and ensure **ALL “FORM to TRAY ASSIGNMENTS”** are set to **“NOT AVAILABLE”**

STEP 6: MAY BE NECESSARY IF YOU ARE EXPERIENCING PAGE LENGTH PROBLEMS.

Ensure the Paper Source is set to **CUT SHEET** in two places of the generic text driver.

- a) **Advanced TAB >> Printing Defaults>> Paper Quality &...**
- b) **General TAB >> Printing Preferences >> Paper Quality**

Thanks for choosing Voucher Printing Systems

"In Business to help you do Business"

ONLINE SUPPORT
See YOU soon at...

www.voucherprinting.com.au

Part of VPS Group Pty Ltd

www.vpsgroup.com.au

IMPORTANT NOTE
PLEASE RETAIN THIS DOCUMENT
FOR FUTURE UPDATES



PHONE: 07 5544 6727
FAX: 07 5544 6767
EMAIL:
support@voucherprinting.com.au

